

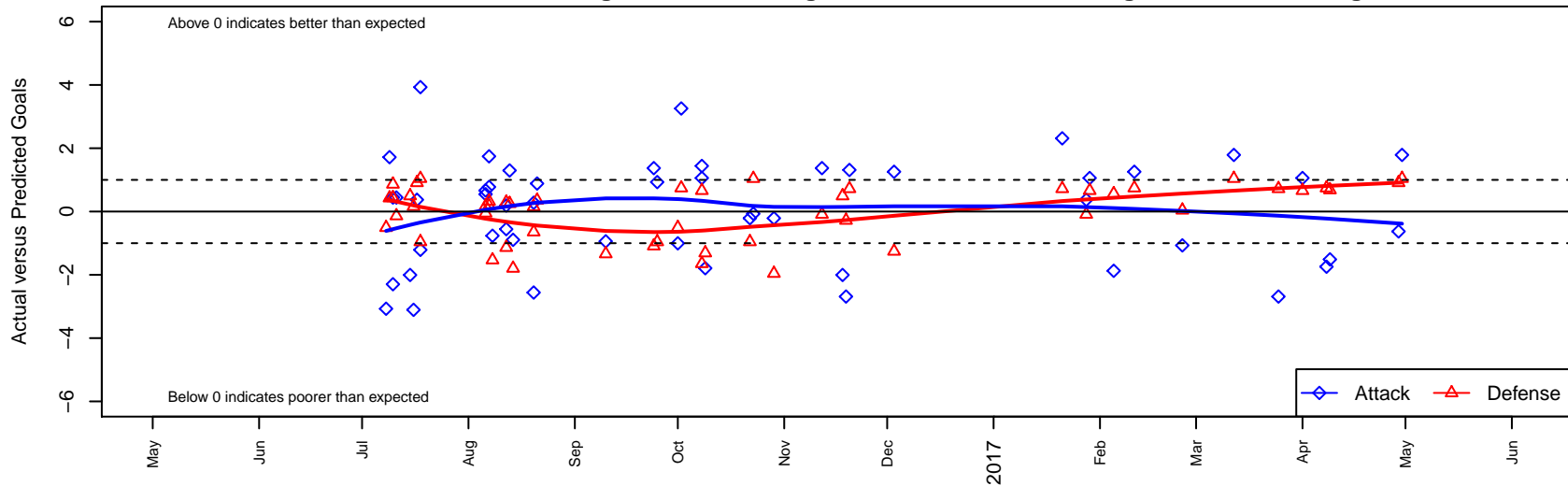
Crossfire Premier A B03

Crossfire Premier SC
 Redmond, WA
 B03 total strength=1848
 attack=36.32 defense=39.25
 fall league = RCL B03 Div 1
 spr league = Win RCL B03 Div 1
 notes= B. James 2013-5

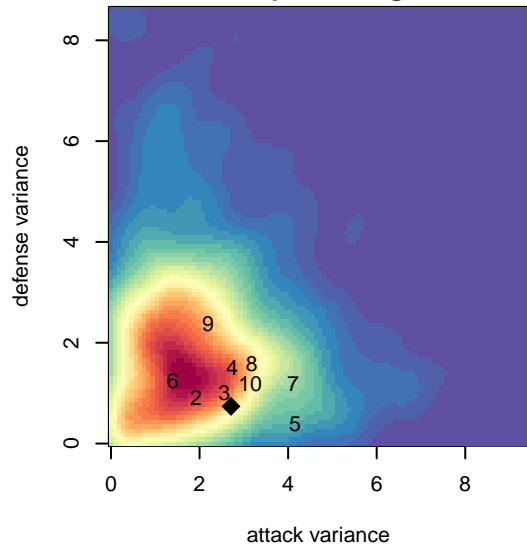
alt names used:
 CROSSFIRE PREMIER B03 A (WA)
 CROSSFIRE PREMIERCROSSFIRE PREMIER
 Crossfire Premier B03 A
 CROSSFIRE PREMIER B03, BERNIE JAMES
 Crossfire Premier B03 A
 Crossfire Premier B03 A

Venues played:
 2016 Nike Crossfire Challenge Gold Group U15
 2016 Nike Crossfire Challenge Super Group U'
 2016 Surf Cup Super Black U14
 2016 REDAPT Cup Gold U15
 2016 NWCL 03
 2016 RCL B03 Div 1
 2016 Win RCL B03 Div 1
 2016 WYS Championship B03

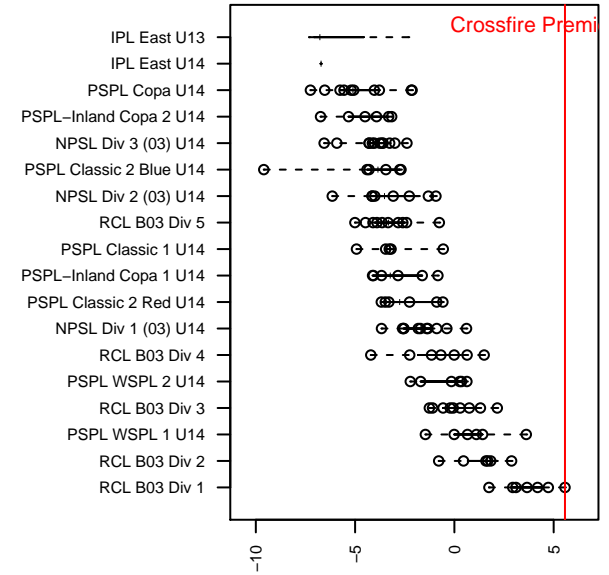
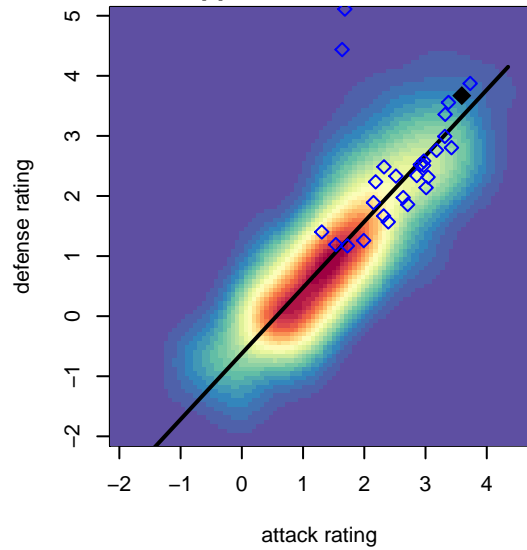
Crossfire Premier A B03
 Dots are actual minus expected GF (blue circles) and GA (red triangles).
 Blue line is smoothed change in attack strength. Red is smoothed change in defense strength.



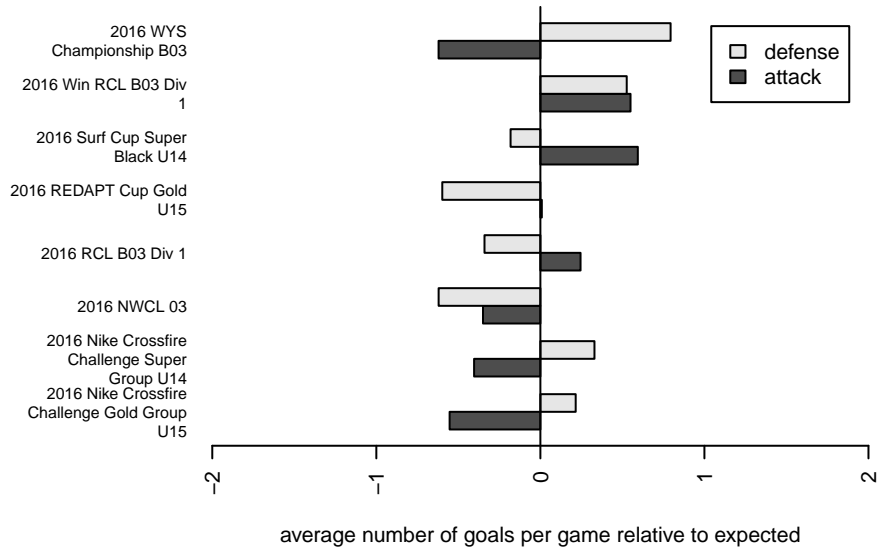
**attack and defense variance (black dot)
relative to other teams
and top 10 in region**



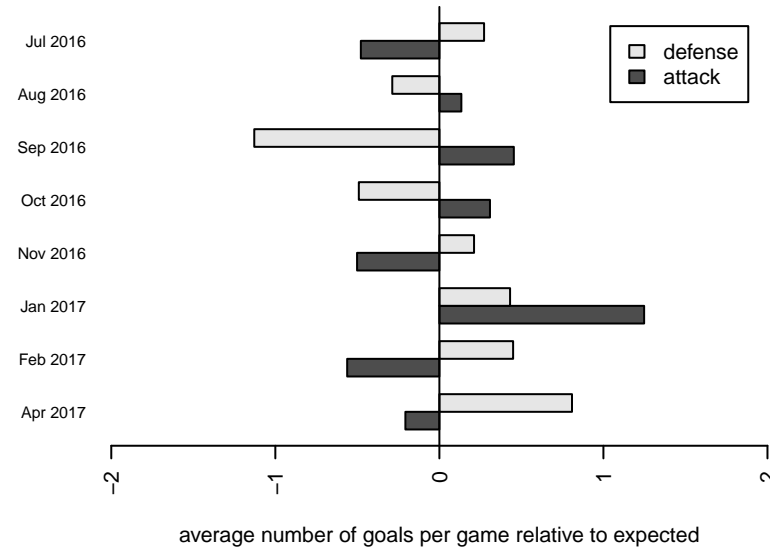
**attack and defense rating
relative to others at age
and all opponents in last 13 months**



Performance relative to 13 month average



Performance relative to 13 month average



| date | home | | away | | venue | pred.home | pred.away |
|-------------|----------------------------|---|------------------------------|---|---------------------------|------------------|------------------|
| 2017-04-30 | Crossfire Premier A B03 | 3 | GS Surf A B03 | 0 | 2016 WYS Championship B03 | 1.21 | 1.04 |
| 2017-04-29 | Crossfire Premier A B03 | 2 | PacNW Maroon B03 | 0 | 2016 WYS Championship B03 | 2.63 | 0.91 |
| 2017-04-09 | Seattle United Tango B03 | 0 | Crossfire Premier A B03 | 3 | 2016 WYS Championship B03 | 0.68 | 4.51 |
| 2017-04-08 | Crossfire Premier A B03 | 1 | Eastside FC Red B03 | 0 | 2016 WYS Championship B03 | 2.74 | 0.74 |
| 2017-04-01 | Crossfire Premier A B03 | 4 | NW United Black B03 | 0 | 2016 WYS Championship B03 | 2.94 | 0.66 |
| 2017-03-25 | WPFC Black B03 | 0 | Crossfire Premier A B03 | 1 | 2016 WYS Championship B03 | 0.72 | 3.69 |
| 2017-03-12 | GS Surf A B03 | 0 | Crossfire Premier A B03 | 3 | 2016 Win RCL B03 Div 1 | 1.04 | 1.21 |
| 2017-02-25 | Seattle United Copa B03 | 1 | Crossfire Premier A B03 | 1 | 2016 Win RCL B03 Div 1 | 1.04 | 2.07 |
| 2017-02-11 | Crossfire Premier A B03 | 4 | Eastside FC Red B03 | 0 | 2016 Win RCL B03 Div 1 | 2.74 | 0.74 |
| 2017-02-05 | Crossfire Premier A B03 | 3 | Washington Timbers Red 1 B03 | 0 | 2016 Win RCL B03 Div 1 | 4.87 | 0.56 |
| 2017-01-29 | NW United Black B03 | 0 | Crossfire Premier A B03 | 4 | 2016 Win RCL B03 Div 1 | 0.66 | 2.94 |
| 2017-01-28 | PacNW Maroon B03 | 1 | Crossfire Premier A B03 | 3 | 2016 Win RCL B03 Div 1 | 0.91 | 2.63 |
| 2017-01-21 | Crossfire Premier A B03 | 6 | WPFC Black B03 | 0 | 2016 Win RCL B03 Div 1 | 3.69 | 0.72 |
| 2016-12-03 | Crossfire Premier A B03 | 4 | Eastside FC Red B03 | 2 | 2016 RCL B03 Div 1 | 2.74 | 0.74 |
| 2016-11-20 | Crossfire Premier A B03 | 5 | WPFC Black B03 | 0 | 2016 RCL B03 Div 1 | 3.69 | 0.72 |
| 2016-11-19 | WPFC Black B03 | 1 | Crossfire Premier A B03 | 1 | 2016 RCL B03 Div 1 | 0.72 | 3.69 |
| 2016-11-18 | Crossfire Premier A B03 | 3 | Snohomish United Black B03 | 0 | 2016 RCL B03 Div 1 | 5.01 | 0.49 |
| 2016-11-12 | Crossfire Premier A B03 | 4 | PacNW Maroon B03 | 1 | 2016 RCL B03 Div 1 | 2.63 | 0.91 |
| 2016-10-29 | Crossfire Premier A B03 | 1 | GS Surf A B03 | 3 | 2016 RCL B03 Div 1 | 1.21 | 1.04 |
| 2016-10-23 | Crossfire Premier A B03 | 2 | Seattle United Copa B03 | 0 | 2016 RCL B03 Div 1 | 2.07 | 1.04 |
| 2016-10-22 | GS Surf A B03 | 2 | Crossfire Premier A B03 | 1 | 2016 RCL B03 Div 1 | 1.04 | 1.21 |
| 2016-10-09 | FC Portland Navy B03 | 2 | Crossfire Premier A B03 | 1 | 2016 NWCL 03 | 0.69 | 2.79 |
| 2016-10-08 | Crossfire Premier A B03 | 7 | Idaho Rush Premier B03 | 2 | 2016 NWCL 03 | 5.56 | 0.35 |
| 2016-10-08 | NW United Black B03 | 0 | Crossfire Premier A B03 | 4 | 2016 RCL B03 Div 1 | 0.66 | 2.94 |
| 2016-10-02 | Eastside FC Red B03 | 0 | Crossfire Premier A B03 | 6 | 2016 RCL B03 Div 1 | 0.74 | 2.74 |
| 2016-10-01 | Snohomish United Black B03 | 1 | Crossfire Premier A B03 | 4 | 2016 RCL B03 Div 1 | 0.49 | 5.01 |
| 2016-09-25 | Seattle United Copa B03 | 2 | Crossfire Premier A B03 | 3 | 2016 RCL B03 Div 1 | 1.04 | 2.07 |
| 2016-09-24 | PacNW Maroon B03 | 2 | Crossfire Premier A B03 | 4 | 2016 RCL B03 Div 1 | 0.91 | 2.63 |

| date | home | | away | | venue | pred.home | pred.aw |
|-------------|-------------------------------------|----|----------------------------------|----|--|------------------|----------------|
| 6-09-10 | Crossfire Premier A B03 | 2 | NW United Black B03 | 2 | 2016 RCL B03 Div 1 | 2.94 | 0.66 |
| 6-08-21 | Westside Timbers Copa B03 | 0 | Crossfire Premier A B03 | 6 | 2016 NWCL 03 | 0.36 | 5.12 |
| 6-08-20 | Idaho Rush Premier B03 | 1 | Crossfire Premier A B03 | 3 | 2016 NWCL 03 | 0.35 | 5.56 |
| 6-08-20 | FC Nova Gold B03 | 0 | Crossfire Premier A B03 | 11 | 2016 NWCL 03 | 0.15 | 10.72 |
| 6-08-14 | Crossfire Premier A B03 | 0 | Crossfire Premier A B02 | 3 | 2016 REDAPT Cup Gold U15 | 0.89 | 1.20 |
| 6-08-13 | Crossfire Premier A B03 | 12 | Washington Timbers Red 2 B02 | 0 | 2016 REDAPT Cup Gold U15 | 10.70 | 0.25 |
| 6-08-12 | Crossfire Premier A B03 | 9 | Crossfire Premier C B02 | 0 | 2016 REDAPT Cup Gold U15 | 8.81 | 0.29 |
| 6-08-12 | GS Surf B B02 | 2 | Crossfire Premier A B03 | 2 | 2016 REDAPT Cup Gold U15 | 0.86 | 2.56 |
| 6-08-08 | Las Vegas Sports Academy Silver B03 | 3 | Crossfire Premier A B03 | 0 | 2016 Surf Cup Super Black U14 | 1.47 | 0.76 |
| 6-08-07 | Crossfire Premier A B03 | 5 | Seleccion Coridica Mexico B03 | 0 | 2016 Surf Cup Super Black U14 | 3.26 | 0.32 |
| 6-08-07 | Crossfire Premier A B03 | 1 | Albion SC Academy B03 | 0 | 2016 Surf Cup Super Black U14 | 0.22 | 0.18 |
| 6-08-06 | Crossfire Premier A B03 | 1 | Global Premier Soccer Bayern B03 | 0 | 2016 Surf Cup Super Black U14 | 0.45 | 0.17 |
| 6-08-06 | San Diego SC Academy Navy B03 | 1 | Crossfire Premier A B03 | 3 | 2016 Surf Cup Super Black U14 | 0.95 | 2.33 |
| 6-07-18 | Seattle United Copa B03 | 0 | Crossfire Premier A B03 | 6 | 2016 Nike Crossfire Challenge Super Grou | 1.04 | 2.07 |
| 6-07-18 | GS Surf A B03 | 2 | Crossfire Premier A B03 | 0 | 2016 Nike Crossfire Challenge Super Grou | 1.04 | 1.21 |
| 6-07-17 | Crossfire Premier A B03 | 3 | PacNW Maroon B03 | 0 | 2016 Nike Crossfire Challenge Super Grou | 2.63 | 0.91 |
| 6-07-16 | Crossfire Premier A B03 | 5 | Academia de Futbol ADF B03 | 0 | 2016 Nike Crossfire Challenge Super Grou | 8.11 | 0.16 |
| 6-07-15 | Snohomish United Black B03 | 0 | Crossfire Premier A B03 | 3 | 2016 Nike Crossfire Challenge Super Grou | 0.49 | 5.01 |
| 6-07-11 | GS Surf B B02 | 1 | Crossfire Premier A B03 | 3 | 2016 Nike Crossfire Challenge Gold Group | 0.86 | 2.56 |
| 6-07-10 | Crossfire Premier A B03 | 3 | GS Surf B B02 | 0 | 2016 Nike Crossfire Challenge Gold Group | 2.56 | 0.86 |
| 6-07-10 | Crossfire Oregon Green I B02 | 0 | Crossfire Premier A B03 | 1 | 2016 Nike Crossfire Challenge Gold Group | 0.43 | 3.30 |
| 6-07-09 | Crossfire Premier A B03 | 8 | WPFC White B02 | 0 | 2016 Nike Crossfire Challenge Gold Group | 6.28 | 0.43 |
| 6-07-08 | WA Rush B02 | 1 | Crossfire Premier A B03 | 3 | 2016 Nike Crossfire Challenge Gold Group | 0.49 | 6.07 |